

# Produktový proces jako základ pro škálování

Pavel Backa

# PRODUCT & ENGINEERING



# PRODUCT & ENGINEERING

150



# PRODUCT & ENGINEERING

280



# Historie

**SCRUM**  
projekty

**SAFE**

**LESS**

**Agilní firma**

# Ataccama

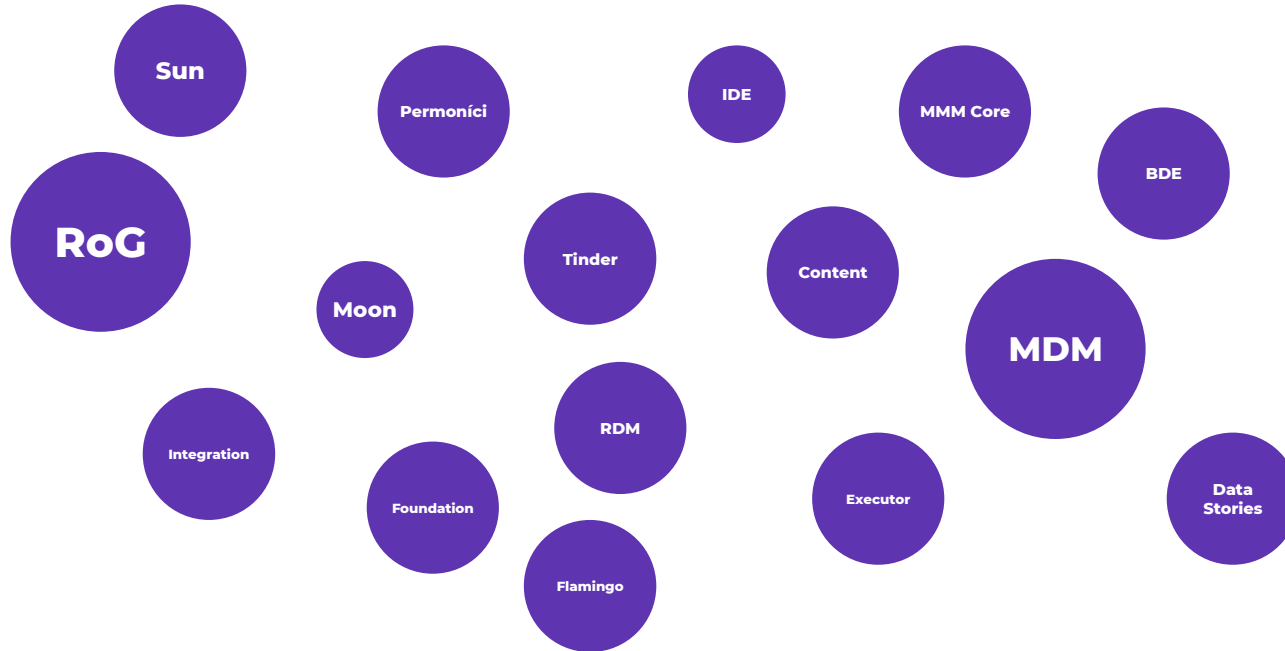
2008

Bootstrapped

\$150M

 500+

# P&E 2021



# SILNÉ STRÁNKY

**SPRINTOVÁNÍ**

**SCHOPNÉ  
TEAMY**

**AGILNÍ**

**PRODUKT**



# SLABÉ STRÁNKY

**TRANSPARENTNOST**

**CHYBĚJÍCÍ  
FOKUS**

**DODÁNÍ  
KOMPLEXNÍCH  
FUNKCÍ**

**ROSTOUCÍ  
TECHNICKÝ  
DLUH**

**ALIGNEMENT**

# FRAMEWORKY / MODEL Y

NETFLIX

SCRUM

SPOTIFY

BASECAMP

SCRUM@SCALE

LESS

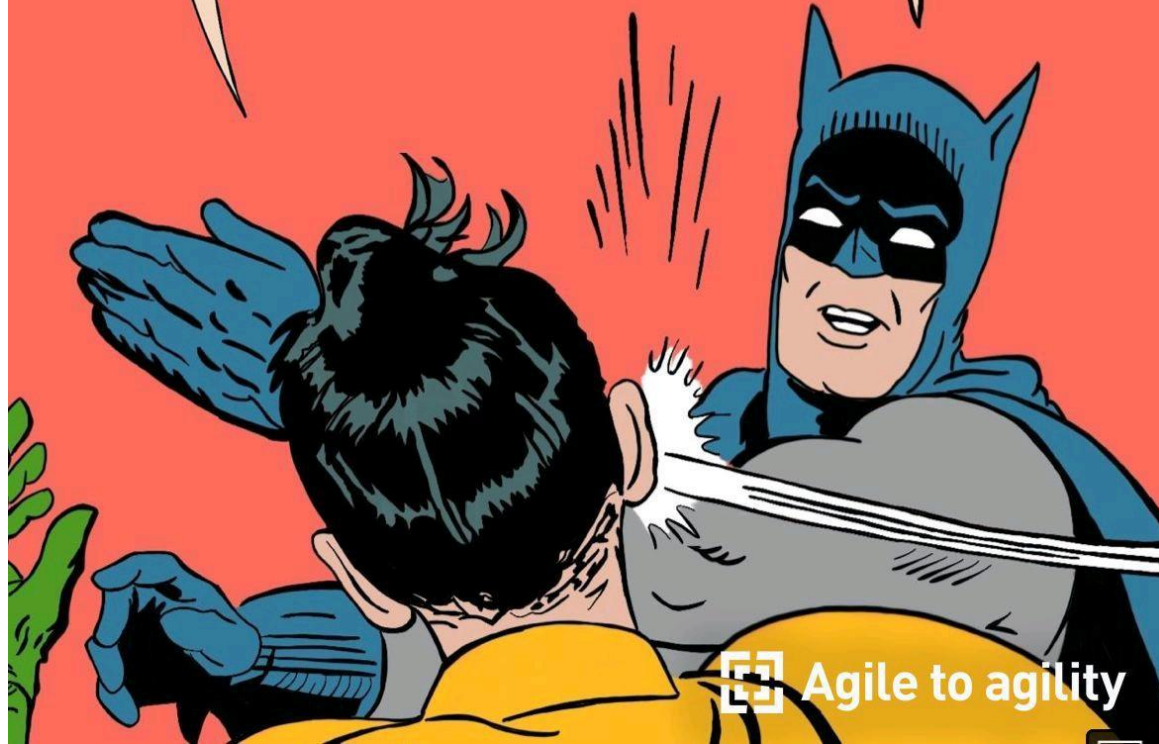
SAFE

PIPEDRIVE

LESS HUGE

Should we implement  
the “Spotify Model”?

There is no such thing as  
“Spotify Model”...



SPACE CENTER  
CATALOG



MISSION

1. MISSION CONTROL



APPROVAL  
2.

3. PRE-FLIGHT



4. LAUNCH



LANDING



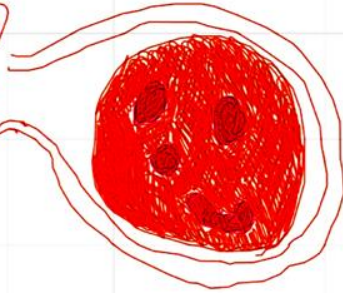
6.

7. DISMISAL



SPACE C. MDM

5. OUTA SPACE

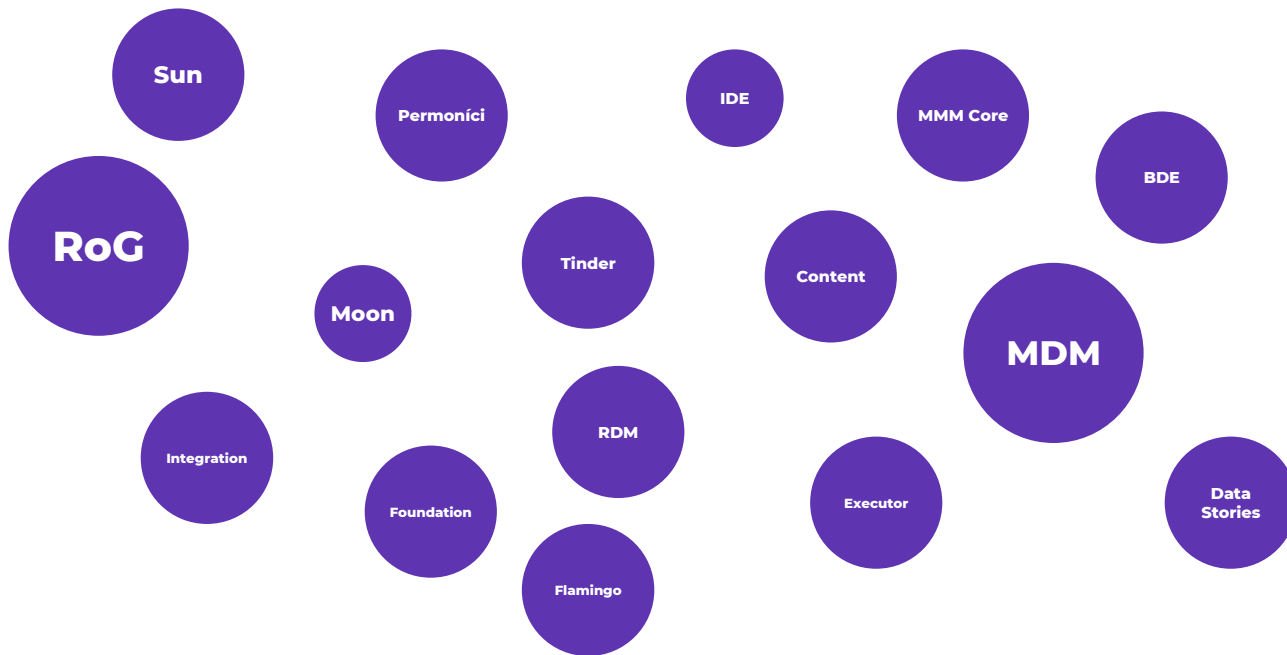


# SpaceUP





# TEAMY



# SPACEPORTY



PM

PD

BE

BE

FE

TW

PM

PM

PD

BE

BE

TW

PM

PD

BE

BE

FE

PM

PD

BE

BE

FE

TW

PM

PD

BE

BE

FE

TW

PM

PD

BE

BE

FE

PM

PD

BE

BE

FE

TW



# MISE



01



3. MISSION CONTROL HQ



4. ASSEMBLING MISSION CREW



2. MISSION PITCH

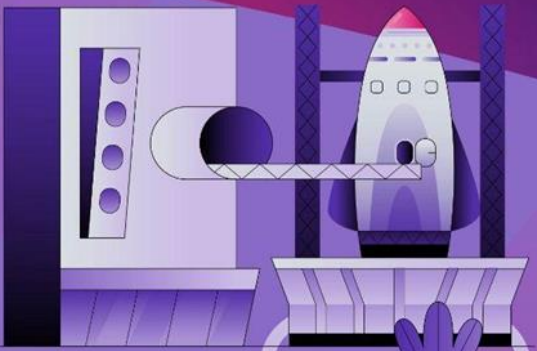


1. DISCOVERY

6. MISSION SPACETIME



7. MISSION LANDING SEQUENCE



5. PRE-FLIGHT



8. MISSION DECOMMISSION

# MISSION PITCH

## Problem

As an **owner**, I want to know about any feedback on data/assets I am responsible for. I need to make sure that if something is not correct, it is fixed. I collaborate with stewards on making data better and provide them to analysts.

---

As an **analyst**, I would like to be able to comment on the assets (data, rules, terms, etc.) to ask additional questions about asset and bring up edit suggestions, even if I have only viewer rights.

---

As an **data steward**, I'd like to communicate with "users" and with owner of my asset. Reply to their questions and implement their suggestions. I would also like to be notified about new comments appearing on my asset.

I need to know about every comment under my CI (on attributes/profiling)

---

As a **consultant/admin**, I'd like to be able to add or remove commenting ability for any entity (want it to be configurable).

Configuring ability should be somehow handling embedded entities in a smart way. For example, Catalog items and attributes and profiling (3 different entities)

# MISSION PITCH

## Contribution to spaceport objectives

This mission contributes to Data Governance objective **Winning purely DG focused deals** by adding support for collaboration/communication within application, which we totally lack today.

## Mission outcome

The goal is to allow people to share their feedback, exchange opinions, or add additional information to existing assets (Terms, Rules, Catalog Item) in a structured way.

# MISSION PITCH

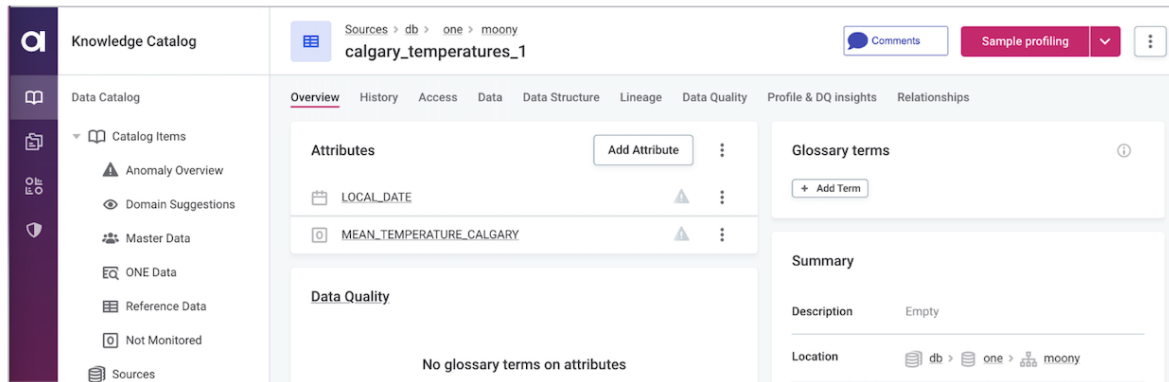
## Solution

We develop brand new component which will be integrated by MMM, One Data, Data Stories etc. Part of this mission will be the development of this component and integration with MMM.

In MMM it will behave as a sidebar and it will allow user to comment screen which is user on.

*Component will be K8s native and will also support Ansible deployment.*

### Comments architecture



The screenshot shows the Knowledge Catalog interface for the dataset 'calgary\_temperatures\_1'. The interface is divided into several sections:

- Navigation Sidebar:** Includes 'Knowledge Catalog', 'Data Catalog', 'Catalog Items', 'Anomaly Overview', 'Domain Suggestions', 'Master Data', 'ONE Data', 'Reference Data', 'Not Monitored', and 'Sources'.
- Header:** Shows the breadcrumb 'Sources > db > one > moony' and the dataset name 'calgary\_temperatures\_1'. It also features a 'Comments' button, a 'Sample profiling' button, and a menu icon.
- Overview Tab:** Contains sections for 'Attributes' (with 'Add Attribute' button), 'Glossary terms' (with '+ Add Term' button), and 'Data Quality' (displaying 'No glossary terms on attributes').
- Summary Section:** Shows 'Description' as 'Empty' and 'Location' as 'db > one > moony'.

# MISSION PITCH

## Mission boundaries

### Required outcomes

- user with any role/permissions can create and delete their own comments on any entity
- user with any role/permissions can reply to any comment in thread
- comments will be hidden behind feature flag/trait (TBD) and should not be in production ready state before fall

### Possible misses

- user can mention user - user will not be notified
- pull comments from sub-entitties and tabs with filters
- user can resolve comment

### Out of scope

- component will not be possible to deploy by ansible - in latter mission

# MISSION PITCH

## Mission needs

### Duration

8 weeks (into CF 13.9) - need for creation brand new component, figure out integrations, design, new interactions etc

### Skills

*BE, FE, UX, PM*

### Tools

-

## Expected launch date

The expected launch date already was ... but officially May 30th

# PITCH

Wednesday, October 5th ▾



**Pavel Backa** 11:11 PM

Čau, prosím tady je další mission pitch: <https://www.notion.so/ataccama/Comments->

Je to poslední mise ke komentářům 👉

Thursday, October 6th ▾



**Jiří** 11:50 AM

Cus, chybí mí tam technické řešení. Takhle tam nemám co schvalovat



**2 replies** Last reply 6 days ago



**Jiří** 11:51 AM

A doporučil bych ti si to po sobě přečíst 😊



1





# GROUND CREW



**30% spaceportu**

**bugy**

**drobné úpravy**

**ad hoc podpora**

**Rotující členové**

# TRANSPARENTNOST



- PM missions brainstorming
- Mission pitch
- Mission observatory
- SP assembly

# SPACEUP METODOLOGIE



<https://medium.com/ataccama-spaceup>

The background is a dark blue-to-purple gradient with various space-themed elements. In the top left, there is a purple planet with a ring. In the top center, a small purple planet. In the top right, a large white moon with craters. In the bottom left, a white rocket with a red nose cone and a red and blue flame trail. In the bottom right, a red planet with a wavy pattern and a small red planet. Numerous white stars of varying sizes are scattered throughout the scene.

# SpaceUP dotazník

po šesti měsících

# SLABÉ STRÁNKY

**TRANSPARENTNOST**

**CHYBĚJÍCÍ  
FOKUS**

**DODÁNÍ  
KOMPLEXNÍCH  
FUNKCÍ**

**ROSTOUCÍ  
TECHNICKÝ  
DLUH**

**ALIGNEMENT**

# Top 5



# Top 5



# O ROK POZDĚJI

**Stále funguje**

**+130 lidí do P&E**

**průměrná délka mise 6 týdnů**

**celkem 130+ misí**

**70% lidí bylo na misi**

**60% lidí bylo v ground crew**

**0 bug policy**

**osobně na osmi misích**



# PŘÍNOS PRO MĚ

**ptám se více proč**

**nižší scope**

**potřeba vysvětlit problém**

**PM meetingy**

# CO SI ODNĚST

**silné/slabe  
stránky**

**Neexistuje jedno dokonalé  
řešení**

**Big bang**

**Začít a iterovat**

**Děkuji**